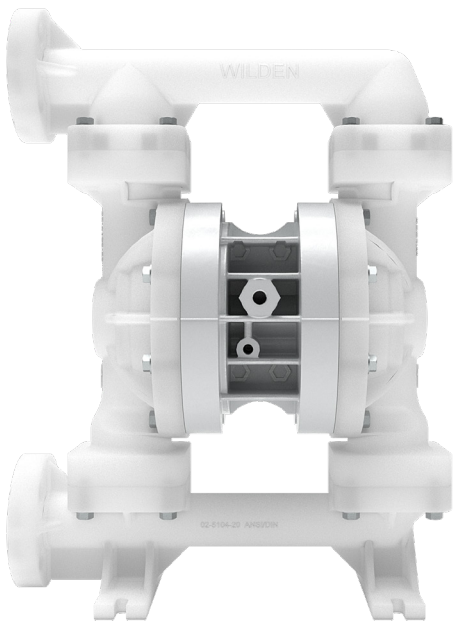




WILDEN®



Pro-Flo® R Series Plastic Pumps

Based on the same legacy design that Jim Wilden invented in 1955, the Wilden Pro-Flo® R Series Air-Operated Double-Diaphragm (AODD) Pump offers the reliability and performance that end users have come to depend on from the global leader in AODD pump technology. Ideally suited for a wide array of markets and industries, the Pro-Flo® R Series combines rugged, bolted construction with a simple, sustainable design to increase productivity and flexibility while reducing downtime and maintenance. It features extensive market and industry applications.

BENEFITS OF PRO-FLO R SERIES PLASTIC PUMPS

Thanks to their unique operating principle, AODD pumps excel in a wide variety of applications and incorporate numerous features and benefits, including:

- Self-priming
- Portable
- Superior product containment
- High vacuum
- Run-dry capable
- No heat generation
- Submersible
- Longest Mean Time Between Failure (MTBF)
- No mechanical seals: reduces the risk of leaks
- Easy installation
- Corrosion-resistant
- Lube-free operation
- Anti-freezing

Applications

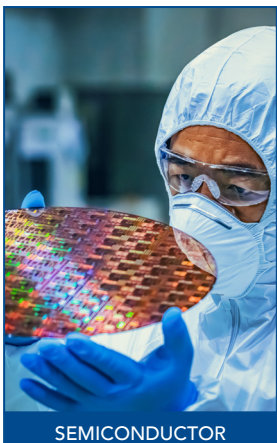
Serving the Lithium Battery, Chemical, Semiconductor, Process and Water/Wastewater markets, Wilden's world-class distributor network ensures that you will have access to the latest pump technologies and fluid transfer services available when you need them.



LITHIUM BATTERY



CHEMICAL



SEMICONDUCTOR



PROCESS

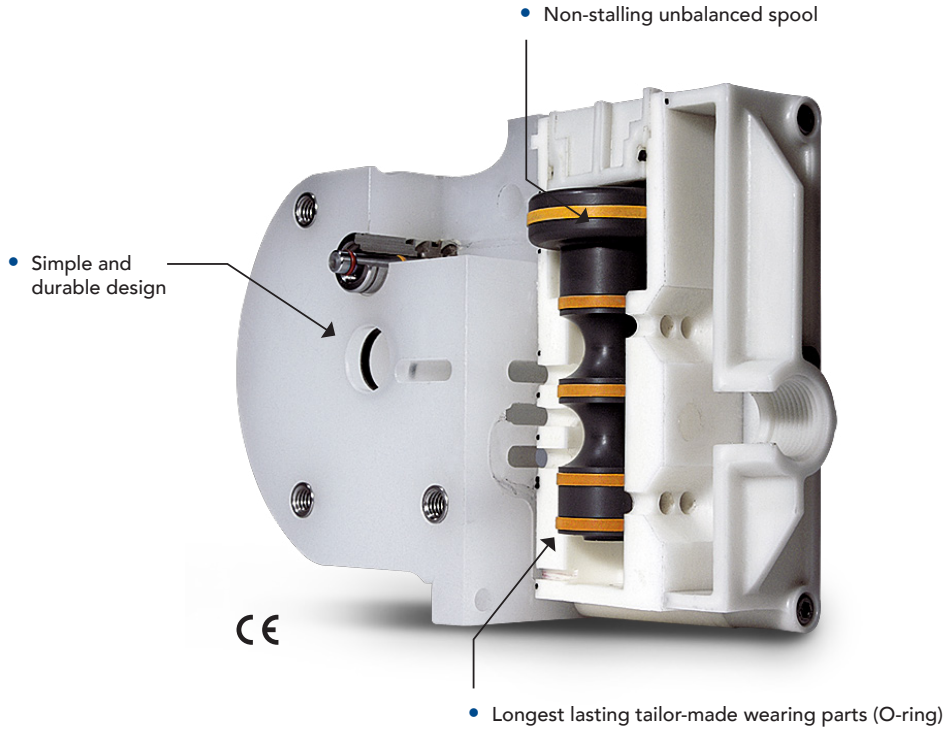


WATER/WASTEWATER

Air Distribution System (ADS) Technology

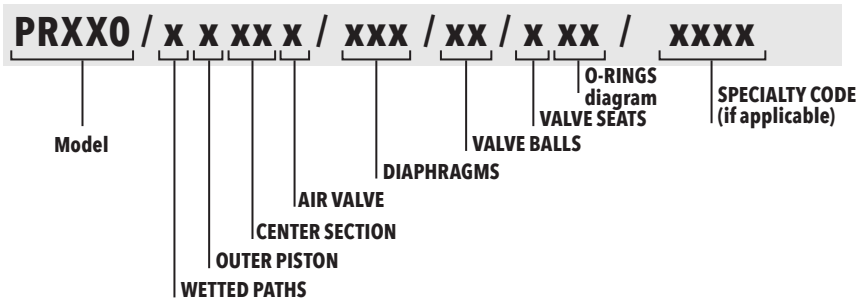
The secret to the success of the Pro-Flo R Series is the incorporation of a simple, durable and economically-conscious Air Distribution System (ADS) that features a metallic center block, air valve and lube-free operation.

The Pro-Flo R ADS incorporates three moving parts – the unbalanced air valve spool, the pilot spool and the main shaft/diaphragm assembly – for simplicity and high reliability.



Pro-Flo® R Series Plastic Pump Designation System

Pro-Flo® R Series Bolted Plastic Pumps



Material Code

Model

PR270 = 1" PRO-FLO R FLANGE CONNECTION (ANSI/DIN COMBO)
 PR470 = 1.5" PRO-FLO R FLANGE CONNECTION (ANSI/DIN COMBO)
 PR870 = 2" PRO-FLO R FLANGE CONNECTION (ANSI/DIN COMBO)

WETTED PATH

P = Polypropylene

OUTER PISTON

P = Polypropylene

CENTER SECTION

PP = Polypropylene

AIR VALVE

P = Polypropylene

DIAPHRAGMS

BNS = BUNA-N (Red Dot)
 NES = NEOPRENE (Green Dot)
 EPS = EPDM (Blue Dot)
 TWS = FULL-STROKE PTFE w /WIL-FLEX™ BACKUP
 VTS = FKM (White Dot)
 WFS = WIL-FLEX™ [Santoprene® (Three Black Dots)]
 ZWS = WIL-FLEX™, EZ-INSTALL [Santoprene® (Three Black Dots)]
 TNU = PTFE W/NEOPRENE BACKUP

VALVE BALLS

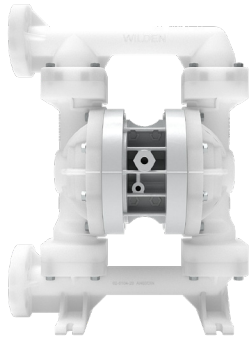
BN = BUNA-N (Red Dot)
 NE = NEOPRENE (Green Dot)
 EP = EPDM (Blue Dot)
 TF = PTFE (White)
 VT = FKM (White Dot)
 WF = WIL-FLEX™ [Santoprene® (Three Black Dots)]

VALVE SEATS

P = Polypropylene

VALVE SEATS O-RINGS

BN = BUNA-N
 TV = PTFE-ENCAPSULATED FKM
 WF = WIL-FLEX™ [Santoprene®]



25 MM (1") PRO-FLO R BOLTED PLASTIC PUMP

DESIGNATION: FLANGE (PR270/P)



Air Inlet: 1/4" FNPT

Liquid Inlet: 25 mm (1")

Liquid Discharge: 25 mm (1")

Connection Type:

DIN/ANSI COMBO

Max. Flow Rate:

220 lpm (58 gpm)

Max. Inlet Pressure:

8.6 bar (125 psig)

Max. Size Solids:

4.76 mm (3/16")

Max. Suction Lift:

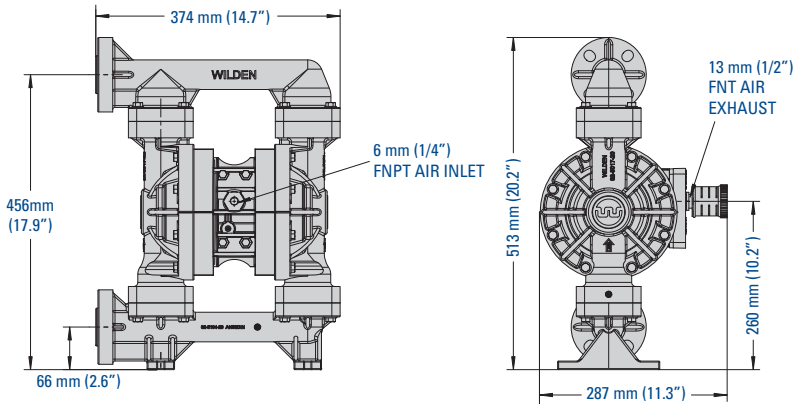
3.6 m Dry (11.9')

9.8 m Wet (32.0')

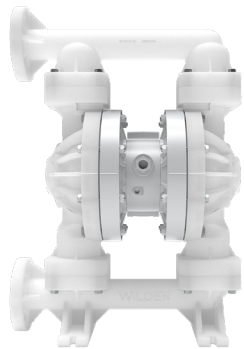
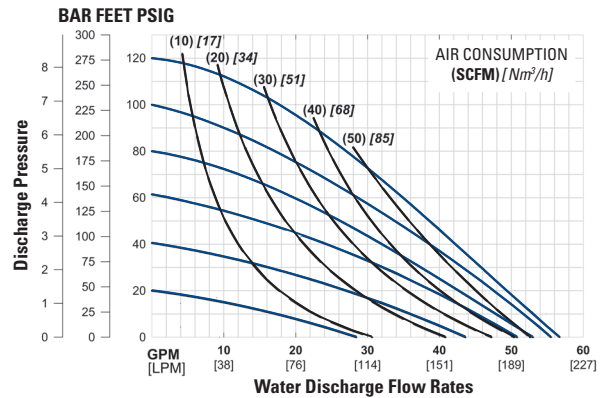
Shipping Weight:

Polypropylene 10 kg (22 lb)

PR270 Dimensions



PR270 Flow Curve TPE-FITTED



38 MM (1-1/2") PRO-FLO R BOLTED PLASTIC PUMP

DESIGNATION: FLANGE (PR470/P)



Air Inlet: 1/2" FNPT

Liquid Inlet: 38 mm (1-1/2")

Liquid Discharge: 38 mm (1-1/2")

Connection Type:

DIN/ANSI COMBO

Max. Flow Rate:

454 lpm (120 gpm)

Max. Inlet Pressure:

8.6 bar (125 psig)

Max. Size Solids:

6.4 mm (1/4")

Max. Suction Lift:

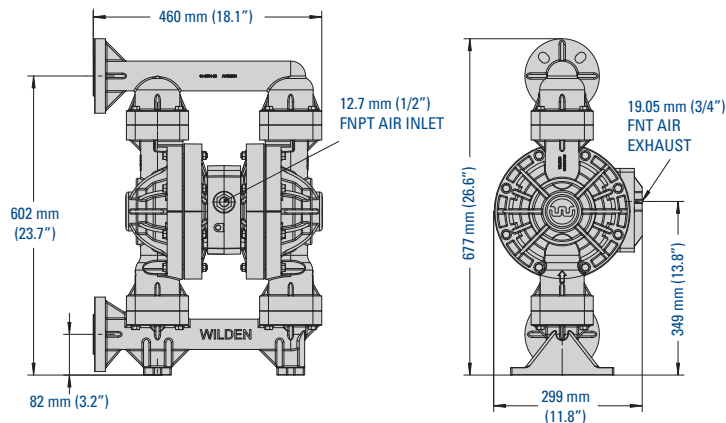
5.7 m dry suction (18.7')

9.7 m wet suction (31.8')

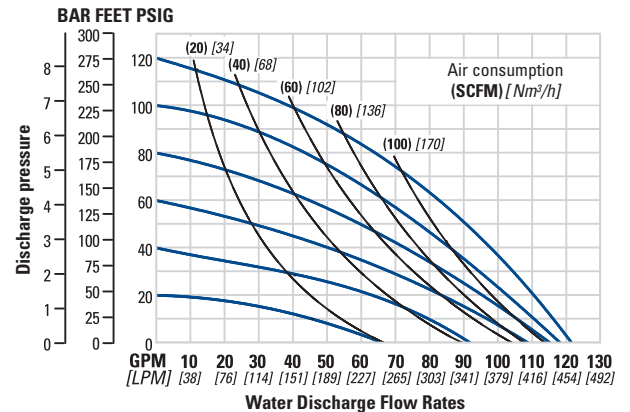
Shipping Weight:

Polypropylene 19 kg (41 lb)

PR470 Dimensions



PR470 Flow Curve TPE-FITTED





51 MM (2") PRO-FLO R BOLTED PLASTIC PUMP

DESIGNATION: FLANGE (PR870/P)



Air Inlet: 1/2" FNPT

Liquid Inlet: 51 mm (2")

Liquid Discharge: 51 mm (2")

Connection Type:

DIN/ANSI COMBO

Max. Flow Rate:

624 lpm (165 gpm)

Max. Inlet Pressure:

8.6 bar (125 psig)

Max. Size Solids:

6.4 mm (1/4")

Max. Suction Lift:

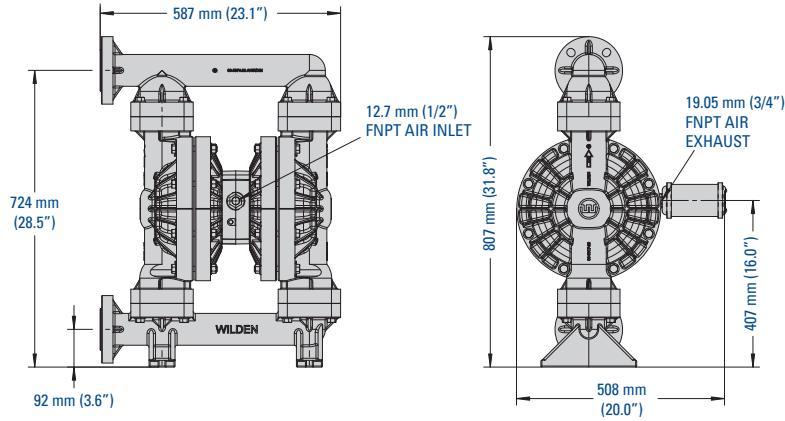
6.2 m Dry (20.4')

9.0 m Wet (29.5')

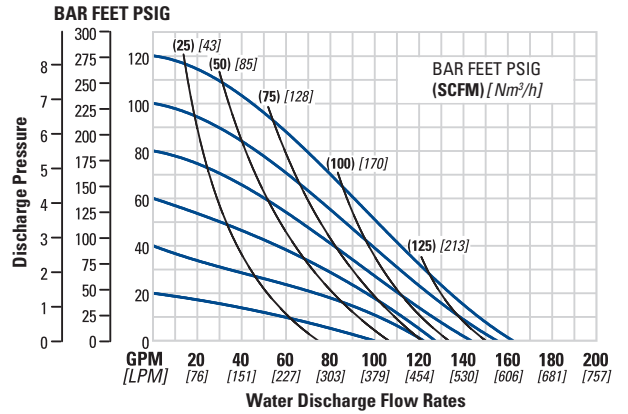
Shipping Weight:

Polypropylene 32 kg (70 lb)

PR870 Dimensions



PR870 Flow Curve TPE-FITTED



PSGC-11720C-02EN

Authorized PSG® Partner:

Where Innovation Flows

Copyright 2026 PSG®, a Dover company.



PSG

Hotline: (+86) 400 600 4026

Email: PSG-Asia@psgdover.com

www.psgdover.com.cn