



MultiDose

Sink / Bucket / Bottle

Instruction, Installation & Operation Manual

A) Description

The MultiDose is a unique hand pump designed to deliver accurate doses of concentrated chemicals into sinks, bottles, buckets, and other containers.

B) Box Contents

- MultiDose unit
- Instruction sheet
- Discharge spout assembly (Bucket Unit only)
- Installation kit
 - Wall Screws
 - Wall Anchors
 - Double Sided Tape
 - Double Hose Barb Adaptor
 - Cable Ties



C) Installation & Operation:

Each unit is tested to ensure quality and will contain water. This water is used to prime the pump the first time it is used.

Site Survey and Installation Requirements

Before an installation takes place it is advisable to complete a site survey to ensure the MultiDose can be installed in a position that meets all of the requirements listed below.

- i. Ensure the wall/substrate is of a quality to safely mount the dispenser
- ii. The floor around the unit must be non-slip or have non-slip matting to avoid slippages
- iii. The unit must be installed in a well-lit area, or an area that can be lit
- iv. Carry out a Risk Assessment for the area in which the unit is mounted



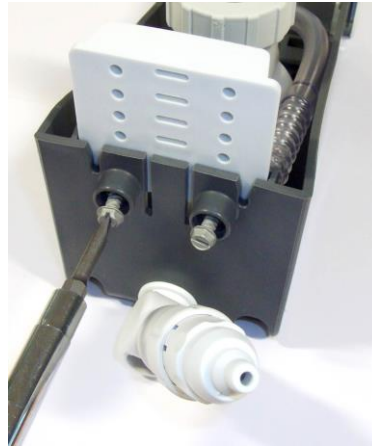
Connection of Discharge Tube (Bucket units only)

- 1) Select desired position of dispenser unit on wall
 - **Recommended height is 146cm (1460mm) to top screw holes**
- 2) Cut discharge spout tubing to appropriate length for selected application.
- 3) At rear of dispenser, remove red cap from hose barb fitting. Take care to keep the maximum amount of water inside the unit as possible to aid priming
- 4) Feed previously cut discharge tubing through exit hole on underside of dispenser and attach to hose barb fitting
- 5) Secure tubing with cable tie provided.



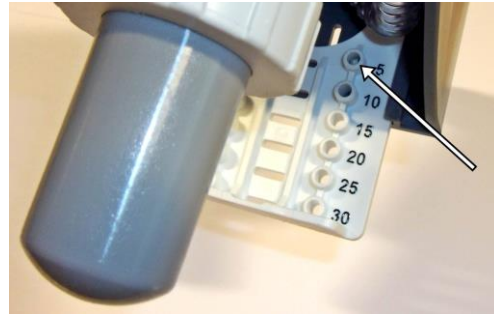
II. Dosage Settings:

1. This dispenser is capable of dispensing between 5 and 30 mls in 5 ml increments. To set dosage, adjust the dosage stop plate to the desired dosage and tighten two screws below as shown on the right.
2. Dosage may be verified by visible screw thread next to appropriate dosage on dosage stop plate. Image on right shown at 5mm setting.



III. Mounting Instructions:

1. To mount the dispenser on wall, either use
 - Template on page 4, and screw in desired location using 3 screws and wall anchors
 - Double sided tape.
2. For Bucket fill model mount discharge spout assembly in desired position on wall below the dispenser using 2 screws and wall anchors.
 - **Recommended height is 43cm (430mm) to spout screw holes**



IV. Connection of chemical feed tube

1. Fit double hose barb adaptor (supplied) into end of chemical inlet tube protruding from bottom of dispenser. Secure with cable tie
2. Connect chemical feed tube onto other end of adaptor. Secure with cable tie.
3. Immerse end of chemical feed tube into chemical container.

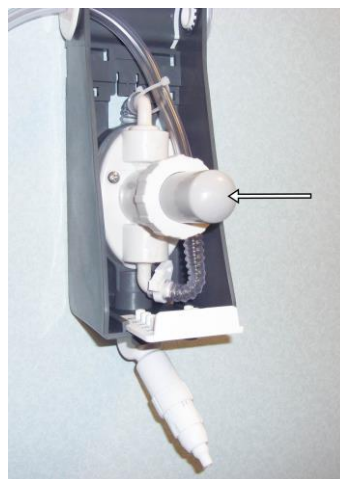


Note:

Never mount chemical above dispenser

V. Priming Unit:

1. Raise cover completely until it snaps into fixed position, exposing pump.
2. Push plunger rapidly and continuously several times until all air is purged from line. It will be necessary to push plunger multiple times to prime unit.
3. Dispenser is now ready to operate.



D) Safety



- Please use this equipment carefully and observe all warnings and cautions.
- Wear PPE when dispensing chemicals or other materials or when working in the vicinity of all chemicals, filling or emptying equipment.
- Always observe safety and handling instructions of the chemical manufacturers.
- Always direct discharge away from you or other persons or into approved containers.
- Always dispense cleaners and chemicals in accordance with manufacturer's instructions.
- Always exercise caution when maintaining your equipment.
- Always re-assemble equipment according to instruction procedures. Be sure all components are firmly screwed or latched into position.
- Keep equipment clean to maintain proper operation.
- You must follow all precautions as advised on the product safety data sheet

E) Mounting Template

- The mounting template is displayed in the background of this page.
- The mounting holes are 5.5cm (55mm) wide, and 11.7cm (117mm) high

F) Troubleshooting

When doing maintenance on equipment please ensure you are following all guidelines in the Safety section

Problem	Solution
Unit does not prime	Check pickup tube is fully immersed in chemical
	Check clamps shown in Fig.2, if loose, replace with new cable tie
	Remove unit from wall, Carefully unscrew collar and remove plunger and spring from chamber, Fill chamber with clean water to just below lip (Fig.1), Re-insert spring and plunger, then screw collar back on tight
Unit does not hold prime	Check clamps shown in Fig.2, if loose, replace with new cable tie
Unit is giving a short dose (less than expected)	Check all above Solutions to ensure chamber is fully primed
Plunger is slow to return	Check pickup tube for kinks
	Check strainer in end of pickup tube for blockages
Nozzle Leaking	Ensure nozzle is seated securely
	Check chemical is not mounted above unit
	Clean nozzle thoroughly
	Replace nozzle

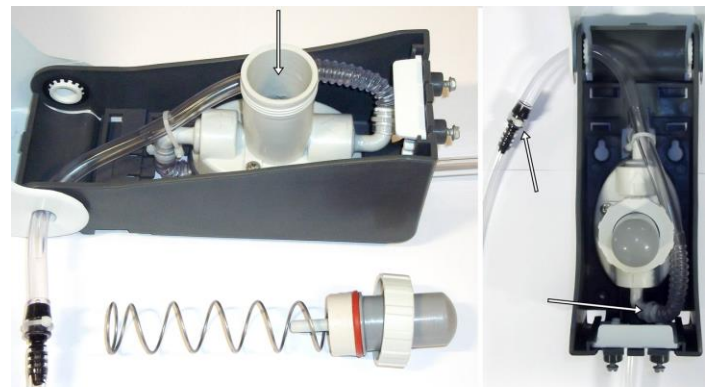
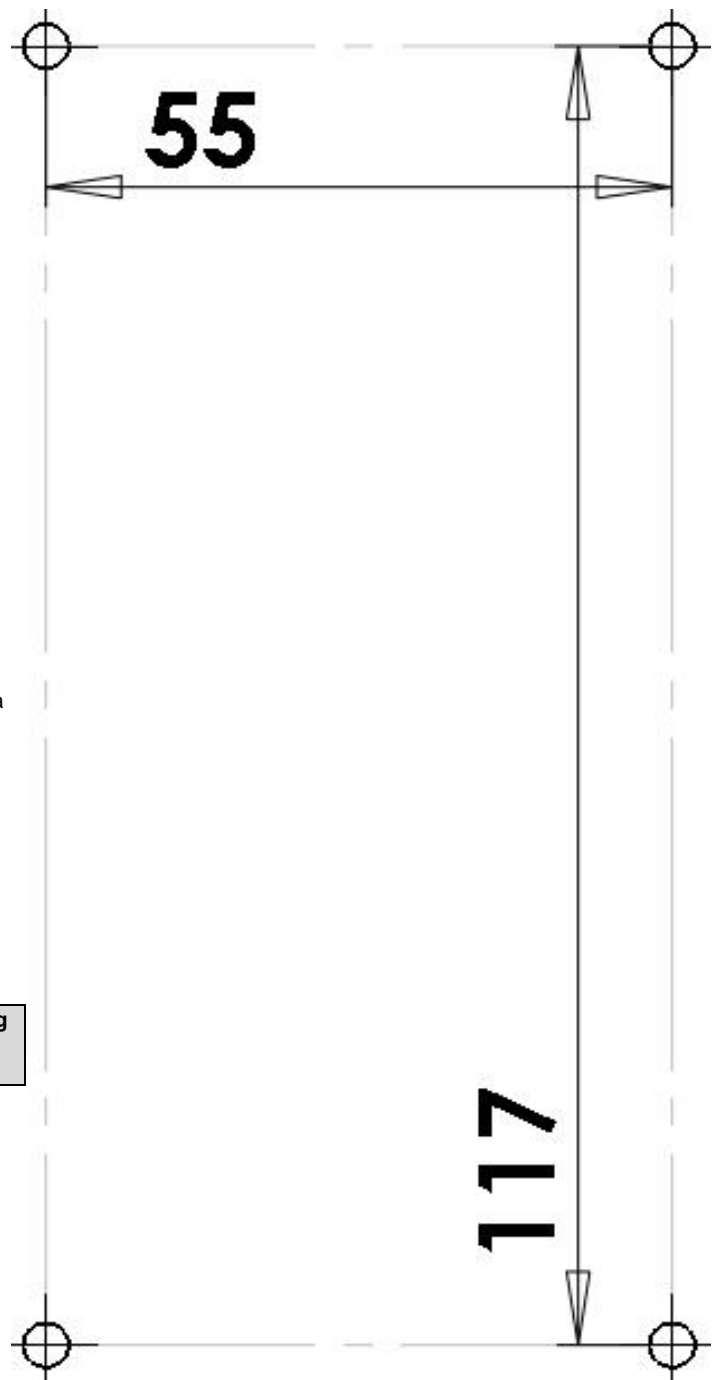


Fig.1

Fig.2